



Official Website QR Code

**东莞市隆腾制罐有限公司**  
Dongguan Longteng Can Manufacturing Co., Ltd

0769-81289039

📍 Room 101, Building 4, No.3, East Fifth Street, Keji Road, Qingxi Town, Dongguan, Guangdong, China

☎ 0086-0769-81289039 📠 0086-0769-81289039

📠 0086-18594945893 / 0086-13794831319

📞 0086-18594945893 🗨 0086-18594945893 / 0086-13794831319

🖱 <https://dglongteng.en.alibaba.com/> ✉ alexyang@dgltzg.cn

# Specialize in tin can customization

Support size/logo/pattern customized



Tin can

Customization



**东莞市隆腾制罐有限公司**

Dongguan Longteng Can Manufacturing Co., Ltd

# Introduction

We are a company professionally in **tin cans manufacturing** and have our factory. Our business includes designing, manufacturing, processing, customizing, selling, and export trade. We have **more than 20 years** of customizing experience. Our materials have been strictly examined and certificated by SGS and ROHS. We have various kinds of advanced technologies and two international technology patents. Our factory is about **5000 square meters** with 9 full-automatic production lines and 4 semi-automatic production lines. We have more than 200 sets of production equipment and **1000 molds**. Until now we have cooperated with **more than 600 partners** such as Dove and many famous tea manufacturers in the domestic market. We strictly conduct quality examination stander in each production process to make sure the quality inspection and the yield have reached 99%. We are a strong company with good qualification and quality warranty. Looking forward to your inquiry.

## Our main products include

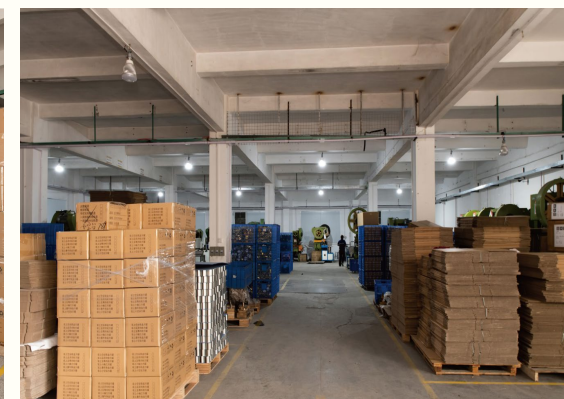
- 1) Various tin jar that suitable for candle, balm, perfume and so on
- 2) Tea leaves, cigarette, wine package and so on
- 3) Canisters for health care/ medical products
- 4) Food, candy, moon-cake, cookies, dries food package
- 5) Gift, electronic products, make up products, jewelry package
- 6) Cutlery, hot-sell products and artwork products package

We are a direct strong factory with **rich experience** and **advance technologies**. We are committed to take our customers in priority position and do our utmost to provide the best service, products and purchase experience. We are constantly researching, designing and improving our products with customer-orientation for our long-tern development. We always think highly of customer's feeling and purchase pattern and enhance our professional ability in per-sales, on-sales and after-sales period and help customers solve the problem or answer their inquiry. In this whole process, we emphasize the requirements and need of our clients, and promise that you will get something from us!

We sincerely want to became your honest and trustworthy supplier in China. Look forward to your inquiry!

# Company Display

Look forward to your visit



Tinplate cans, also known as tin cans or metal cans, are containers made of thin sheets of iron coated with a layer of tin. They are commonly used for food, snacks, dry food, and other products package that require airtight and durable storage. Tinplate cans are an excellent packaging option that provides many benefits to consumers. Their durability, lightweight, and eco-friendliness make them a sustainable choice for packaging. It can be made in versatile size and has strong ability to be customized that also make them popular.

Tinplate cans come in various sizes and shapes, including round, rectangular, and square. They can also have a variety of lid, such as pull tabs, twist caps, or crown caps. This versatility makes them suitable for a wide range of products, from canned foods to paint and chemical products.



LT-001: 50x40mm



LT-002: 60x40mm



LT-003: 65x45mm



LT-010: 95x60x22mm



LT-011: 77x77x57mm



LT-012: 75x110mm



LT-004: 73x50mm



LT-005: 80x52mm



LT-006: 65x45mm



LT-013: 75x93mm



LT-014: 83x25mm



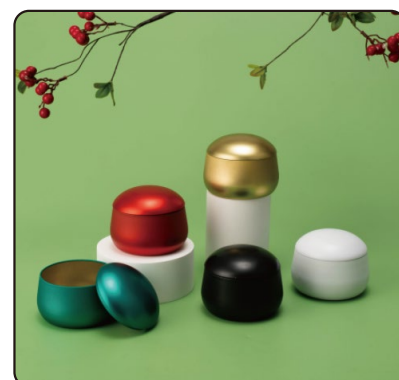
LT-015: 70x23mm



LT-007: 75x51mm



LT-008: 88x56mm



LT-009: 88x68mm



LT-016: 60x34x10mm



LT-071: 80x50x15mm



LT-072: 95x63x18mm

Disclaimer: All tin can products listed above are only used to show product size, appearance and color effects. The printing design is owned by the customer, reproduction and resale are strictly prohibited!

Disclaimer: All tin can products listed above are only used to show product size, appearance and color effects. The printing design is owned by the customer, reproduction and resale are strictly prohibited!

The cans can have different shapes and sizes, but the basic structures are same. The body of the can is formed by a cylindrical sheet of tinplate that is welded or seamed together. The top and bottom of the can are made of same sheet of tinplate but are formed into different shapes which is depending on the type of closure used.

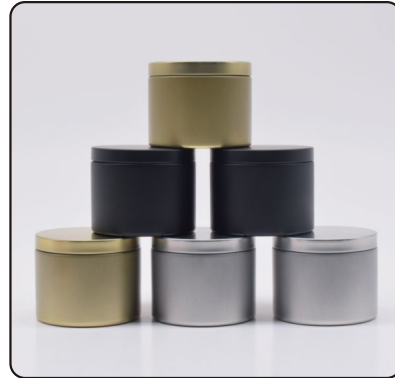
The top of the can can be opened with a pull-tab, which is attached to a scored line in the lid, allowing the lid to be peeled off easily. Another type of closure is the twist-off cap, which is screwed onto the can and can be twisted off to open the can. Crown caps are also widely used, which is the most simple structure and easy to open.



LT-073: 75x62mm



LT-074: 115x35mm



LT-075: 90x62mm



LT-082: 77x77x50mm



LT-083: 105x28mm



LT-084: 90x52mm



LT-076: 73x60mm



LT-077: 50x50mm



LT-078: 80x61mm



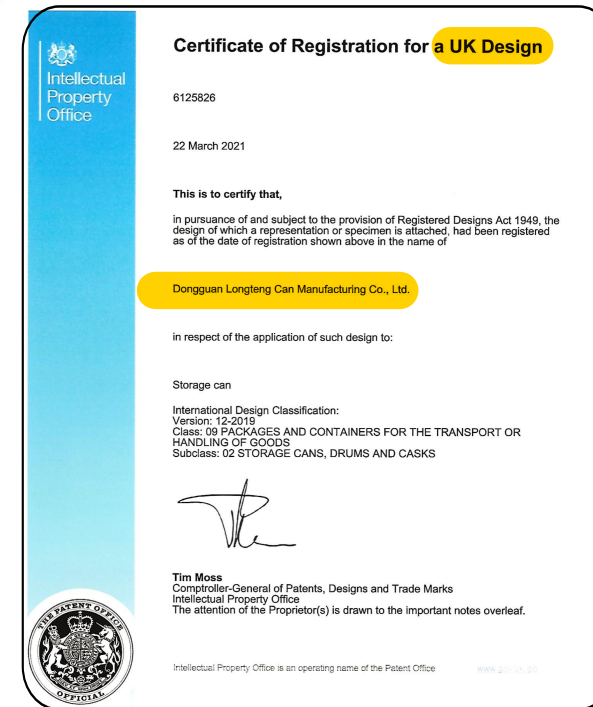
LT-079: 65x52mm



LT-080: 90x20mm



LT-081: 107x73x27mm



Appearance patent of UK



Appearance patent of EP

Disclaimer: All tin can products listed above are only used to show product size, appearance and color effects. The printing design is owned by the customer, reproduction and resale are strictly prohibited!

Disclaimer: All tin can products listed above are only used to show product size, appearance and color effects. The printing design is owned by the customer, reproduction and resale are strictly prohibited!

Inside the can, there is often a protective coating to prevent the can's contents from reacting with the metal. Additionally, some cans have an interior polymer coating to improve the can's resistance to corrosion and to protect the contents from contamination.



The manufacturing process of tinplate cans involves cutting the steel sheets into appropriate sizes, and then forming them into the desired shape using specialized machinery. The cans are then cleaned, dried, and sealed to ensure airtight packaging.



LT-017: 125x75x192mm



LT-018: 121x91x122mm



LT-019: 87x70x166mm



LT-026: 220x220x41mm



LT-027: 146x65x34mm



LT-028: 127x95x195mm



LT-020: 175x142x170mm



LT-021: 77x77x190mm



LT-022: 85x190mm



LT-029: 130x90x188mm



LT-030: 75x93mm



LT-031: 78x56x116mm



LT-023: 150x225mm



LT-024: 80x70x120mm



LT-025: 100x200mm



LT-032: 70x70x105mm



LT-033: 117x76x43mm



LT-034: 105x66x162mm

Disclaimer: All tin can products listed above are only used to show product size, appearance and color effects. The printing design is owned by the customer, reproduction and resale are strictly prohibited!

Disclaimer: All tin can products listed above are only used to show product size, appearance and color effects. The printing design is owned by the customer, reproduction and resale are strictly prohibited!

# What is screen printing?

Screen printing, also known as silk screening or serigraphy, is a printing technique that involves using a mesh screen to transfer ink onto a substrate. The screen is made up of a fine mesh, typically made of polyester or nylon, that is stretched tightly over a frame. Areas of the screen are blocked off with a stencil or emulsion, leaving open spaces through which ink can pass.



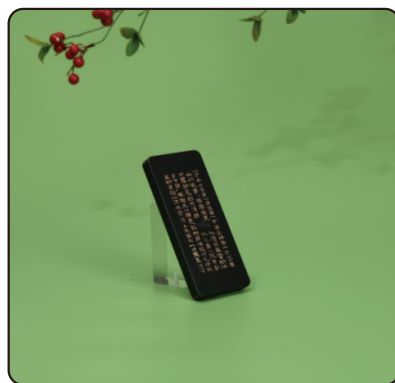
The ink is then pushed through the open areas of the screen with a squeegee onto the substrate below. Screen printing is commonly used to print on a variety of substrates, including textiles, plastics, paper, and metal. It is a popular method for printing logos, designs, and graphics onto t-shirts, signs, posters, and other promotional items. Screen printing allows for vibrant, long-lasting prints with sharp details and opaque colors.



LT-035: 120x69x14mm



LT-036: 160x65x31mm



LT-037: 146x64x12mm



LT-044: 128x128x41mm



LT-045: 145x95x80mm



LT-046: 90x125mm



LT-038: 35x35x175mm



LT-039: 105x68x31mm



LT-040: 175x95x10mm



LT-047: 110x100mm



LT-048: 75x100mm



LT-049: 100x65x27mm



LT-041: 46x63mm



LT-042: 112x88x15mm



LT-043: 135x115x30mm



LT-050: 100x65x30mm



LT-051: 105x85x15mm



LT-052: 109x88x20mm

Disclaimer: All tin can products listed above are only used to show product size, appearance and color effects. The printing design is owned by the customer, reproduction and resale are strictly prohibited!

Disclaimer: All tin can products listed above are only used to show product size, appearance and color effects. The printing design is owned by the customer, reproduction and resale are strictly prohibited!

# What is UV printing?



UV printing, also known as UV-curing printing, is a digital printing process that uses ultraviolet (UV) light to dry or cure ink as it is printed onto a substrate. The process involves using a UV ink that is formulated to dry instantly when it comes into contact with UV light. The ink is printed onto the substrate using a UV printing machine, which exposes the ink to UV light as it is printed. This process results in a high-quality, durable print that is resistant to fading, scratching, and water damage.



UV printing is commonly used to print on a variety of substrates, including plastics, metals, paper, and more. It is a popular method for printing outdoor signage, vehicle graphics, promotional items, and other applications where durability and longevity are important. UV printing is also more environmentally friendly than traditional printing methods, as it produces less waste and uses less energy.



LT-053: 110x80x17mm



LT-054: 78x25mm



LT-055: 108x67mm



LT-062: 278x218x110mm



LT-063: 110x80x18mm



LT-064: 98x98x65mm



LT-056: 64x64x84mm



LT-057: 70x173mm



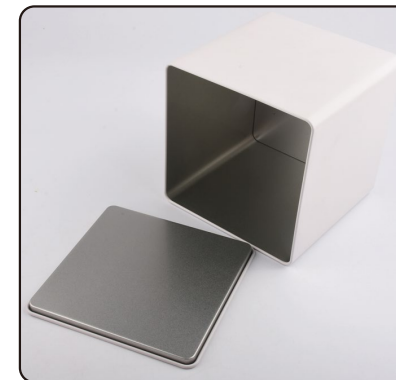
LT-058: 68x170mm



LT-065: 85x85x85mm



LT-066: 75x75x57mm



LT-067: 165x165x165mm



LT-059: 83x155mm



LT-060: 200x200x200mm



LT-061: 255x140x47mm



LT-068: 94x94x74mm



LT-069: 46x234mm



LT-070: 75x150mm

Disclaimer: All tin can products listed above are only used to show product size, appearance and color effects. The printing design is owned by the customer, reproduction and resale are strictly prohibited!

Disclaimer: All tin can products listed above are only used to show product size, appearance and color effects. The printing design is owned by the customer, reproduction and resale are strictly prohibited!

# What is CMKY color printing?



CMYK printing refers to a printing process that uses four ink colors - Cyan, Magenta, Yellow, and Key (black) - to create a wide range of colors and shades. The letters in "CMYK" represent the four ink colors used in the process. The CMYK color model is based on subtractive color mixing, where the inks are applied on top of a white substrate and absorb or subtract certain wavelengths of light to create different colors.



In CMYK printing, each color is printed separately using a printing press or a digital printer. The colors are printed in layers on top of each other to create the final image. The amount of each color used is controlled by a digital file that specifies the color values for each pixel in the image.



LT-105: 70x57mm



LT-106: 133x52mm



LT-107: 116x86x22mm



LT-114: 102x82x180mm



LT-115: 90x60x70mm



LT-116: 75x75x105mm



LT-108: 65x90mm



LT-109: 160x160x60mm



LT-110: 55x30x67mm



LT-117: 75x100mm



LT-118: 153x145mm



LT-119: 183x183x80mm



LT-111: 140x75x209mm



LT-112: 75x75x150mm



LT-113: 87x87x190mm



LT-120: 198x198x71mm



LT-121: 275x210x55mm



LT-122: 162x62mm

Disclaimer: All tin can products listed above are only used to show product size, appearance and color effects. The printing design is owned by the customer, reproduction and resale are strictly prohibited!

Disclaimer: All tin can products listed above are only used to show product size, appearance and color effects. The printing design is owned by the customer, reproduction and resale are strictly prohibited!

# What is embossment?

Embossment is a decorative technique that involves creating a raised or three-dimensional design on a material or surface. This can be done by stamping, engraving, or molding a design onto the material, creating a raised surface that stands out from the surrounding area. Embossment is often used in art, printing, and in the design of decorative objects, such as metalwork, pottery, and leather goods. It can also be used to create texture and detail in architectural features, such as ornate ceilings or wall panels.



FACTORY OUTLET



DELIVERY ON TIME



PRICE ADVANTAGE



QUALITY ASSURANCE



LT-123: 77x77x48mm



LT-124: 90x90x50mm



LT-125: 98x98x35mm



LT-132: 80x50mm



LT-133: 162x162x85mm



LT-134: 83x78x105mm



LT-126: 175x175x50mm



LT-127: 260x110x85mm



LT-128: 90x90x82mm



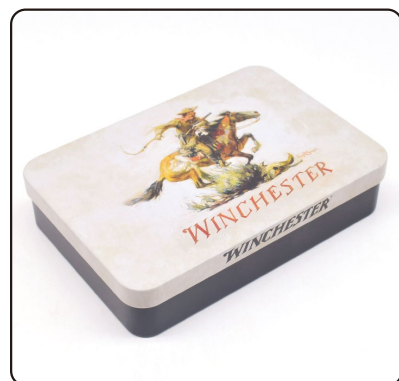
LT-135: 101x99x66mm



LT-136: 80x80mm



LT-137: 60x48x15mm



LT-129: 163x114x31mm



LT-130: 192x126x88mm



LT-131: 205x150x102mm



LT-138: 50x30x9mm



LT-139: 60x25x10mm



LT-140: 173x124x32mm

Disclaimer: All tin can products listed above are only used to show product size, appearance and color effects. The printing design is owned by the customer, reproduction and resale are strictly prohibited!

Disclaimer: All tin can products listed above are only used to show product size, appearance and color effects. The printing design is owned by the customer, reproduction and resale are strictly prohibited!

20+ Years | 5000 m<sup>2</sup> | 1000+ | 200+ set | 50000000+  
 Tin cans customization experience | Factory Area | Number of molds | Production equipment | Annual output



Size: 2oz(62\*42mm), support custom size/logo/pattern



Food grade material  
Multiple usages

Durable, anti-corrosive  
Eco-friendly, recyclable  
Compact body, huge capacity



LT-141: 70x28mm



LT-142: 90x33mm



LT-143: 300x90x65mm



LT-150: 368x248x76mm



LT-151: 250x190x65mm



LT-152: 268x190x60mm



LT-144: 175x60x160mm



LT-145: 90x183mm



LT-146: 99x45mm



LT-147: 90x65mm



LT-148: 210x210x65mm



LT-149: 305x305x70mm



- ① LT-153: 105x105x150mm
- ② LT-154: 300x205x150mm
- ③ LT-155: 200x100x150mm
- ④ LT-156: 210x210x150mm

Disclaimer: All tin can products listed above are only used to show product size, appearance and color effects. The printing design is owned by the customer, reproduction and resale are strictly prohibited!

Disclaimer: All tin can products listed above are only used to show product size, appearance and color effects. The printing design is owned by the customer, reproduction and resale are strictly prohibited!



Size:120\*92\*118mm in stock  
support custom size/logo/pattern



Food grade material  
Multiple usages

Durable,anti-corrosive  
Eco-friendly,recyclable  
Light weight,high quality



Size:80\*80mm  
support custom size/logo/pattern



Food grade material  
Multiple usages

Durable,anti-corrosive  
Eco-friendly,recyclable  
Light weight,high quality



LT-085: 170x95x15mm



LT-086: 200x107x27mm



LT-089: 75x100mm



LT-096: 152x30mm



LT-097: 210x180mm



LT-098: 130x18mm



LT-090: 90x117mm



LT-091: 105x85x22mm



LT-092: 66x66x22mm



LT-099: 190x52mm



LT-100: 100x52mm



LT-101: 130x75mm



LT-093: 128x95x75mm



LT-094: 70x42x15mm



LT-095: 132x83x58mm



LT-102: 65x41mm



LT-103: 95x70mm



LT-104: 83x120mm

Disclaimer: All tin can products listed above are only used to show product size, appearance and color effects. The printing design is owned by the customer, reproduction and resale are strictly prohibited!

Disclaimer: All tin can products listed above are only used to show product size, appearance and color effects. The printing design is owned by the customer, reproduction and resale are strictly prohibited!



Size:60\*50\*15mm in stock  
support custom size/logo/pattern



Food grade material  
Multiple usages



Durable,anti-corrosive  
Eco-friendly,recyclable  
Light weight,high quality



Size:105\*80\*60mm,  
support custom size/logo/pattern



Food grade material  
Multiple usages



Durable,anti-corrosive  
Eco-friendly,recyclable  
Compact body,huge capacity



Disclaimer: All tin can products listed above are only used to show product size, appearance and color effects. The printing design is owned by the customer, reproduction and resale are strictly prohibited!

Disclaimer: All tin can products listed above are only used to show product size, appearance and color effects. The printing design is owned by the customer, reproduction and resale are strictly prohibited!